

**MHSAA STATE CONCERT EVALUATION**  
**DIRECTIONS AND SITE LOGISTICS**  
**OAK GROVE HIGH SCHOOL**

**Directions to Oak Grove High School**

Take the Hwy 98 W Exit from I 59 and continue driving West on Hwy 98. Turn left onto Old Hwy 11. Go approximately 1 mile and Oak Grove High School is on your left. **Enter campus on 16<sup>th</sup> section land road directly behind the football stadium.** DO NOT enter at the main entrance where the Oak Grove High School sign is located.

**BECAUSE OF DAILY SCHOOL BUS TRAFFIC, THERE WILL BE NO ARRIVALS OR DEPARTURES DURING THE FOLLOWING TIMES:**

**7:45 AM – 8:20 AM**

**2:00 PM – 2:15 PM**

**3:30 PM – 4:00 PM**

Depending on your performance time, you may need to make adjustments in your arrival time to allow for this traffic. If you do arrive during this time, you may wait in the holding area adjacent to the football stadium.

**Campus Arrival/Departure**  
**(SEE MAP)**

- 1) Buses, trailers, and equipment trucks will enter behind the football stadium. DO NOT enter at the main campus entrance.
- 2) Buses should stop at the holding area parking lot immediately to your left as you arrive on campus to assemble instruments. All instruments should be assembled except percussion.
- 3) Proceed around the main parking lot to the front of the Performing Arts Center. Bands will enter through the PAC Hallway. (Bands SHOULD NOT enter through the main PAC entrance.) There will be a hallway monitor to greet you. Give this person your scores and seating diagram.
- 4) When students have unloaded, buses will park across the street at Temple Baptist Church in the designated parking area. This is a short walk but we will provide transportation to any directors who are driving buses.
- 5) Equipment trucks/trailers will continue driving past the PAC entrance. Turn right at the stop sign, then right at the loading dock driveway. Unload and park directly across the road in the designated area. (Follow arrows on map.)
- 6) Upon completion of Concert and Sight-Reading, the buses will pick up students at the PAC Hallway Entrance. Equipment will load out at the Hallway Exit adjacent to the PAC loading dock driveway.

**Warm Up**  
**(SEE MAP)**

- 1) Bands will enter the school through the Hallway Entry by the gym. (Clearly marked) Upon entry, take the first left and proceed to Warm Up Room 1 or Warm Up Room 2. Each of them will be on your left and will be clearly marked.
- 2) A greeter will notify you when it is time to enter and exit the Warm Up Room. Follow the directional arrows on the map to the stage and from the stage to the Sight-Reading Room.

**Performing Arts Center Stage**  
**(SEE MAP)**

- 1) Approximately 10 minutes before your performance time, you will begin moving from the Warm Up Room to the Stage. A greeter will be there to assist you.
- 2) It is the director's responsibility to move from the Warm Up Room at the correct time. PLEASE BE COOPERATIVE WHEN THE GREETERS INFORM YOU OF THE TIME.

**Equipment Provided by Oak Grove High School**

**Concert**

Four Timpani, Chimes, Bass Drum, Bells, Xylophone, Vibraphone, Marimba

**Sight-Reading**

Three Timpani, Bells, Bass Drum

**Rest Rooms**

Rest Rooms are located on both hallways near the warm up rooms, in the hallway en route to the stage, and in the main lobby of the PAC. (Do not use these rest rooms as changing facilities.)

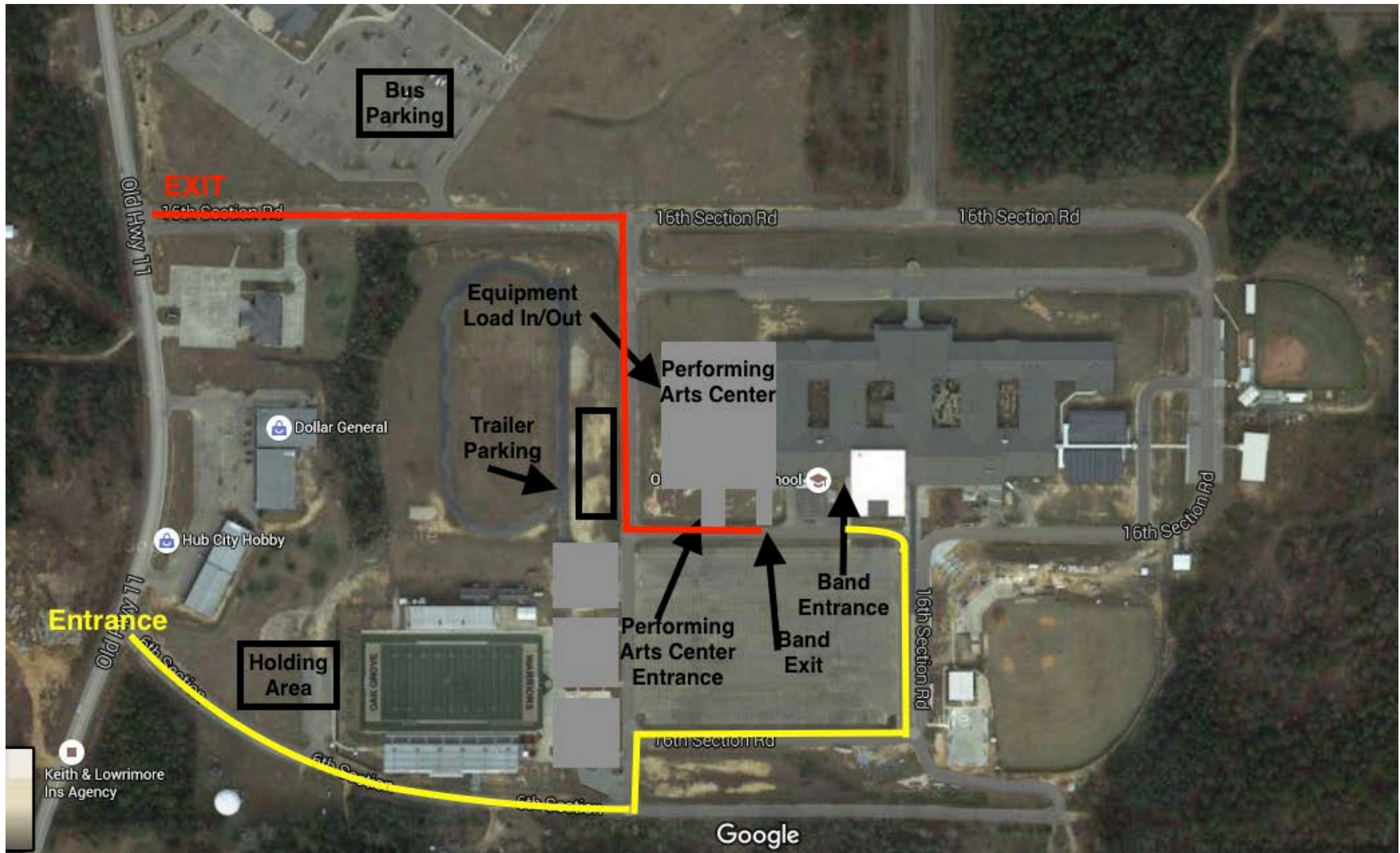
Note: Security will be on duty during this event. You are advised not to leave buses or equipment unattended.

EMERGENCY NUMBER FOR PARENTS: Oak Grove High School: 601-264-7232

EMERGENCY NUMBER FOR DIRECTORS: MHSAA: 601-924-6400 or Oak Grove High School: 601-264-7232

Please notify MHSAA and Oak Grove High School if you experience any delays or problems.

Oak Grove High School – Traffic and Bus Route – State Concert Evaluation 2016



MSHAA STATE CONCERT EVALUATION  
OAK GROVE HIGH SCHOOL  
FLOW CHART

