

Oak Grove High School Band

5198 Old Highway 11
Hattiesburg, MS 39402

Directors,

We are pleased to host you and your students at the South Region MHSAA Concert Band Evaluation at Oak Grove High School. Please read the included information which I hope that you will find helpful in your planning. Please contact me if you have questions regarding our facilities or logistical information.

Jerry Pickering
601-416-3604
jerry.pickering@lamark12.org

MHSAA STATE CONCERT EVALUATION SITE LOGISTICS

Arriving on Campus

From Hwy. 98 West (Hardy St.)

Turn left onto Old Highway 11 and go approximately one mile (you will pass Temple Baptist Church on your left). **Pass the main entrance on your left (where the OGHS sign is) and enter campus directly behind Warrior Stadium via 16th Section Rd.**

There will be no arrivals or departures on campus during the following times due to daily school bus traffic - Old Highway 11 is extremely busy during these times:

7:45 am - 8:20 am, 2:00 pm - 2:15 pm, 3:30 pm - 4:00 pm

Campus Arrival and Departure

1. Buses, trailers, and equipment trucks will enter campus behind the football stadium on 16th Section Rd. Do not use the entrance near the OGHS sign.
2. Assemble instruments (except percussion) before unloading the bus. There is a parking area immediately to your left as you arrive on campus that you may use to assemble instruments.
3. Unload your buses on the sidewalk into the gym hallway (see map). There will be a MHSAA staff member in the gym hallway entrance that will take your judge's scores and seating diagram and guide you to your warm up area.
4. After unloading students, buses will park across the street in the parking lot at Temple Baptist Church. We will have a shuttle available for directors that are driving buses.
5. Equipment trucks/trailers will continue driving past the front entrance of the PAC, turning right at the stop sign. The loading dock driveway is on the right. After equipment is unloaded park across the street in the designated area (see map).
6. Following your performance buses may be loaded from the PAC Hallway. Equipment will be loaded out through the double doors adjacent to the loading dock.

**Warm-Up
(see map)**

1. Bands will enter the building through the Gym Hallway (clearly marked). After you enter the building a MHSAA staff member will guide you to your warm up area. Both rooms are on the left side of the hallway and will be clearly marked.
2. Your MHSAA guide will notify you when you may enter and exit the warm up area.
3. Follow the directions to the stage and sight-reading room (see map).

**Concert Performance
OGHS Performing Arts Center
(see map)**

1. Your MHSAA guide will notify you approximately 10 minutes prior to your performance time and you will begin moving to the stage.
2. It is the director's responsibility to move from the warm up room at the correct time. Be cooperative with guides as they assist us with staying on time throughout the day.

The following percussion equipment will be provided by Oak Grove High School:

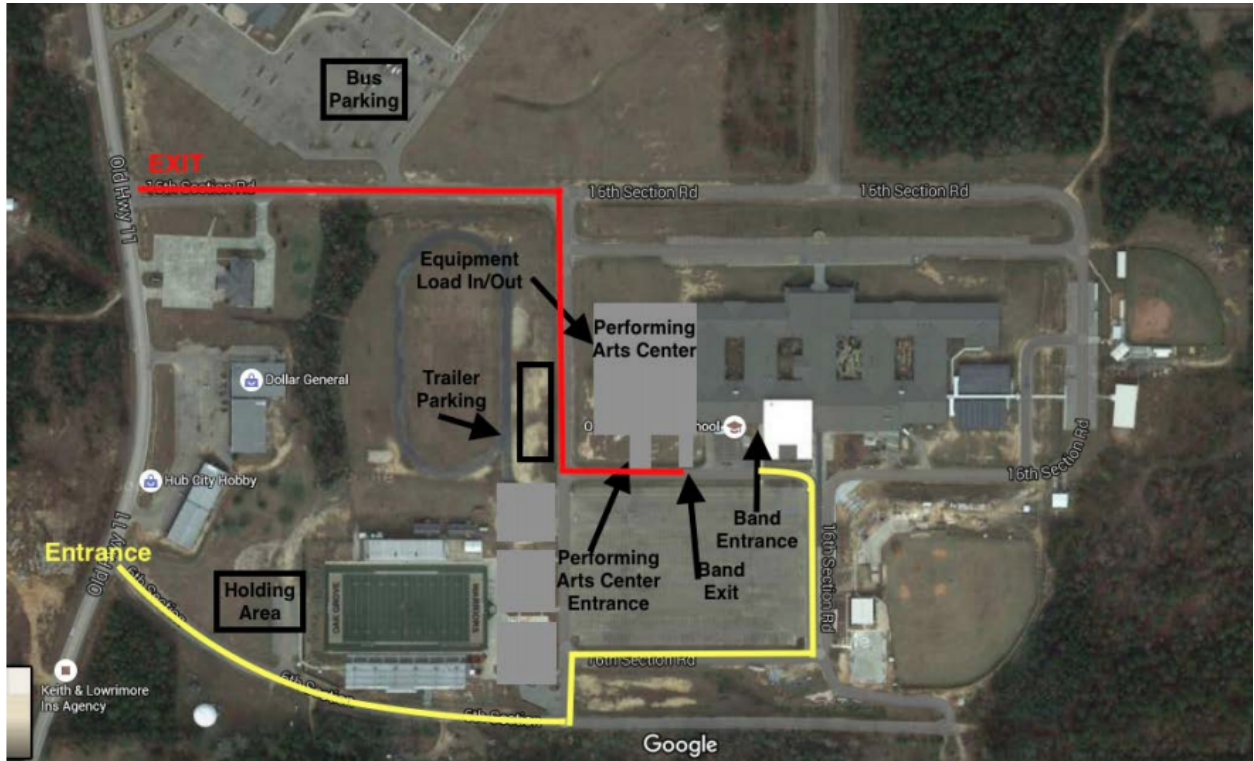
Stage: Four Timpani, Chimes, Bass Drum, Bells, Xylophone, Vibraphone, Marimba

Sight-Reading: Three Timpani, Bells, Bass Drum

Other Useful Information

1. **Restrooms** are located on both hallways near the warm up rooms, in the hallways on the way to the stage, and in the lobby of the PAC. **Do not use the restrooms as changing facilities.**
2. School will be in session. Although we will have security officers on campus during the entirety of the event we do not advise that you leave instruments, equipment, buses, or personal items unattended.
3. In the event of an emergency:
 - a. Parents should call:
 - i. OGHS Office: 601-264-7232
 - b. Directors
 - i. Delays or problems getting to the event, etc.:
 1. MHSAA: 601-924-6400
 2. OGHS Office: 601-264-7232
4. Buses must park in the parking lot at Temple Baptist Church - if you plan on staying to let students listen to other bands, please keep this in mind.
5. We are glad to have schools stay and listen to other bands.
 - a. Do not enter or exit while a band is performing their program.
 - b. Students should **listen** to the performances and be a good audience to bands on stage. Appropriate applause is encouraged and appreciated. Remind students that it is inappropriate to be on their cell phone during a performance.
 - c. No food or drink is allowed in the OGHS Performing Arts Center.

OAK GROVE HIGH SCHOOL CAMPUS OVERVIEW



Oak Grove High School Campus Flow Chart

